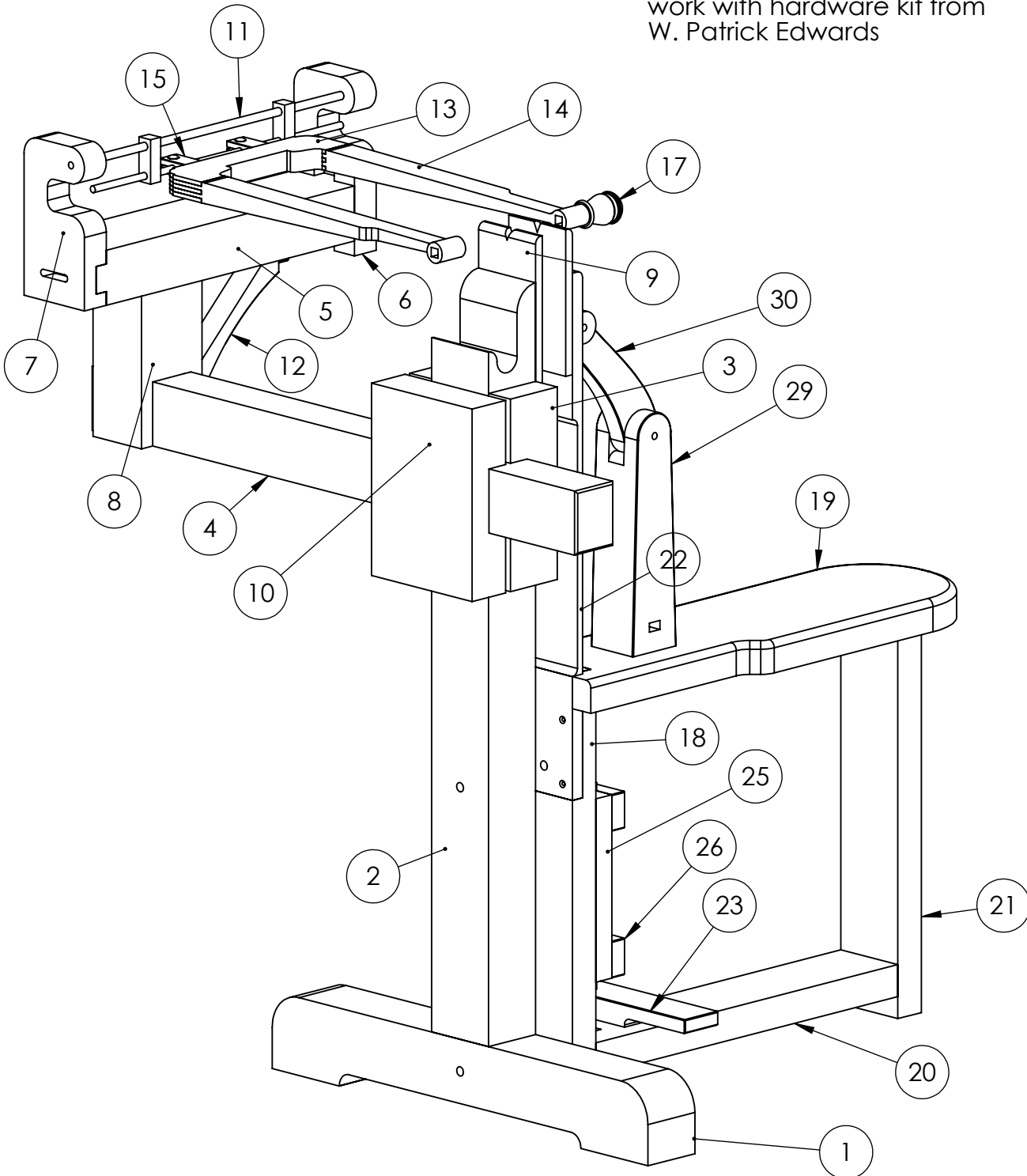


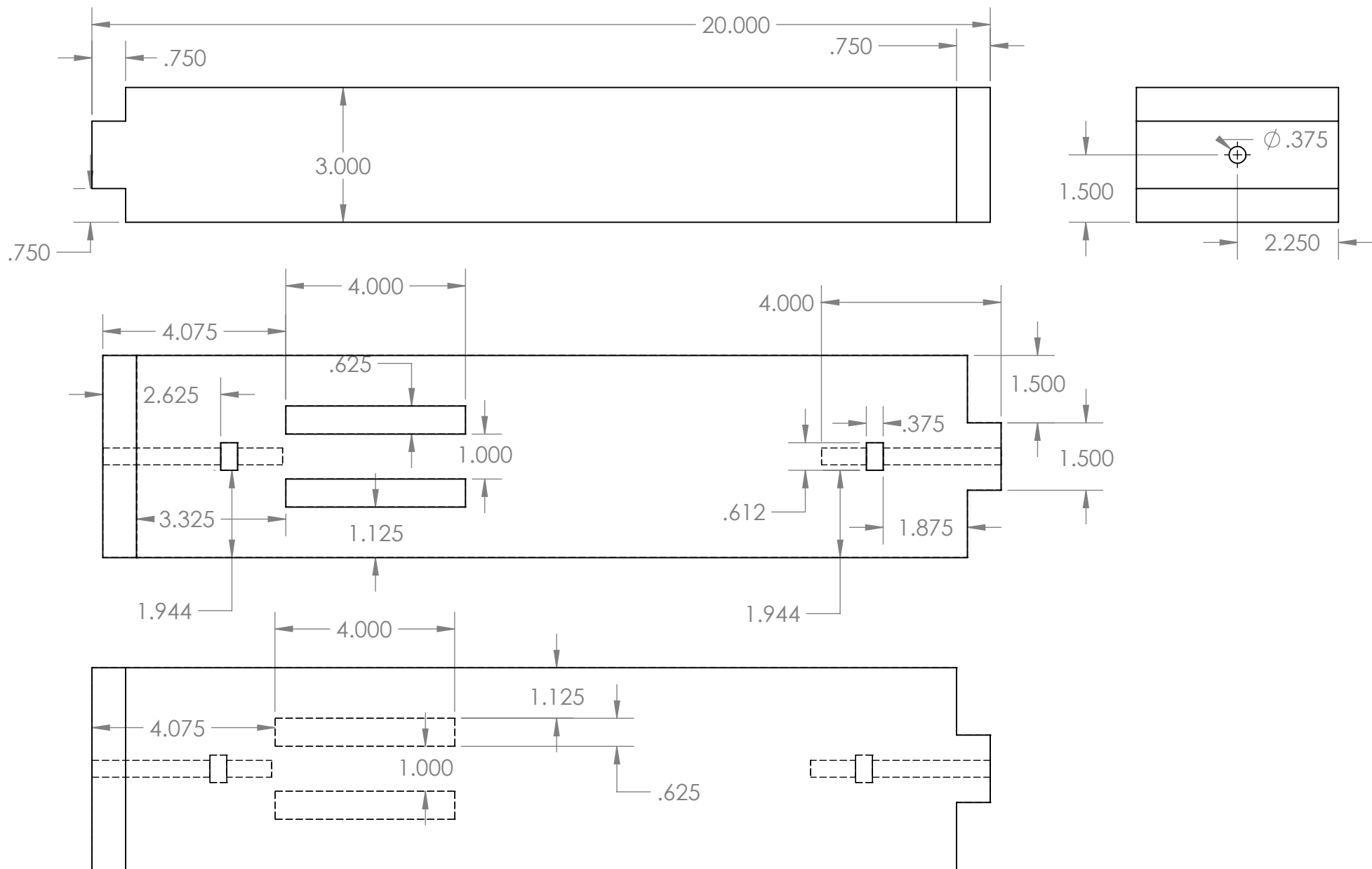
61cm Chevalet, designed to work with hardware kit from W. Patrick Edwards



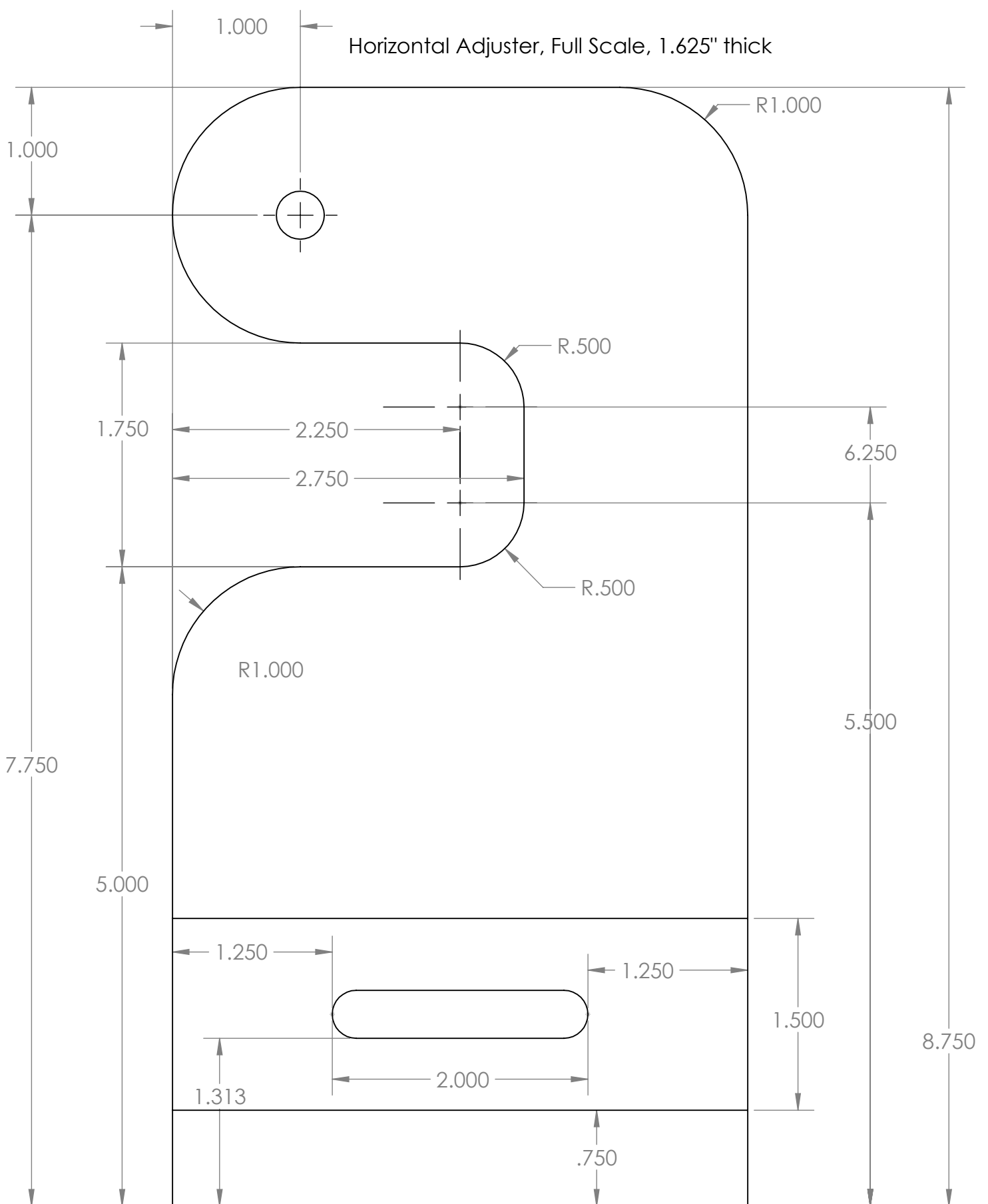
ITEM NO.	PART NUMBER	QTY.
1	Base	1
2	UprightPost	1
3	SideBlock	2
4	HorizontalSupportArm	1
5	SawFrameArm	1
6	VertAdj	1
7	HorizAdj	1
8	SawVertPost	1
9	ViseJaw	2
10	Clamp Plate	1
11	gimbal	1
12	AngleBrace	1
13	SawBack	1
14	SawArm	2
15	SawBackGimbal	2
16	RHSNBOLT 0.25-20x1x.75-N	2
17	Knob	1
18	FrontLeg	1
19	seat	1
20	SeatStretcher	1
21	RearLeg	1
22	ViseRearSpring	1
23	FootBar	1
24	FootBarSlider	1
25	FootBarGuide	2
26	FootBarRetainer	2
29	ClampRiser	1
30	LeverArm	1

These drawings released under Creative Commons Attribution-NonCommercial license <https://creativecommons.org/licenses/by-nc/4.0> You may not charge for these drawings, if you were charged to obtain these drawings please report to mcglynnonmaking.com

Saw Frame Arm

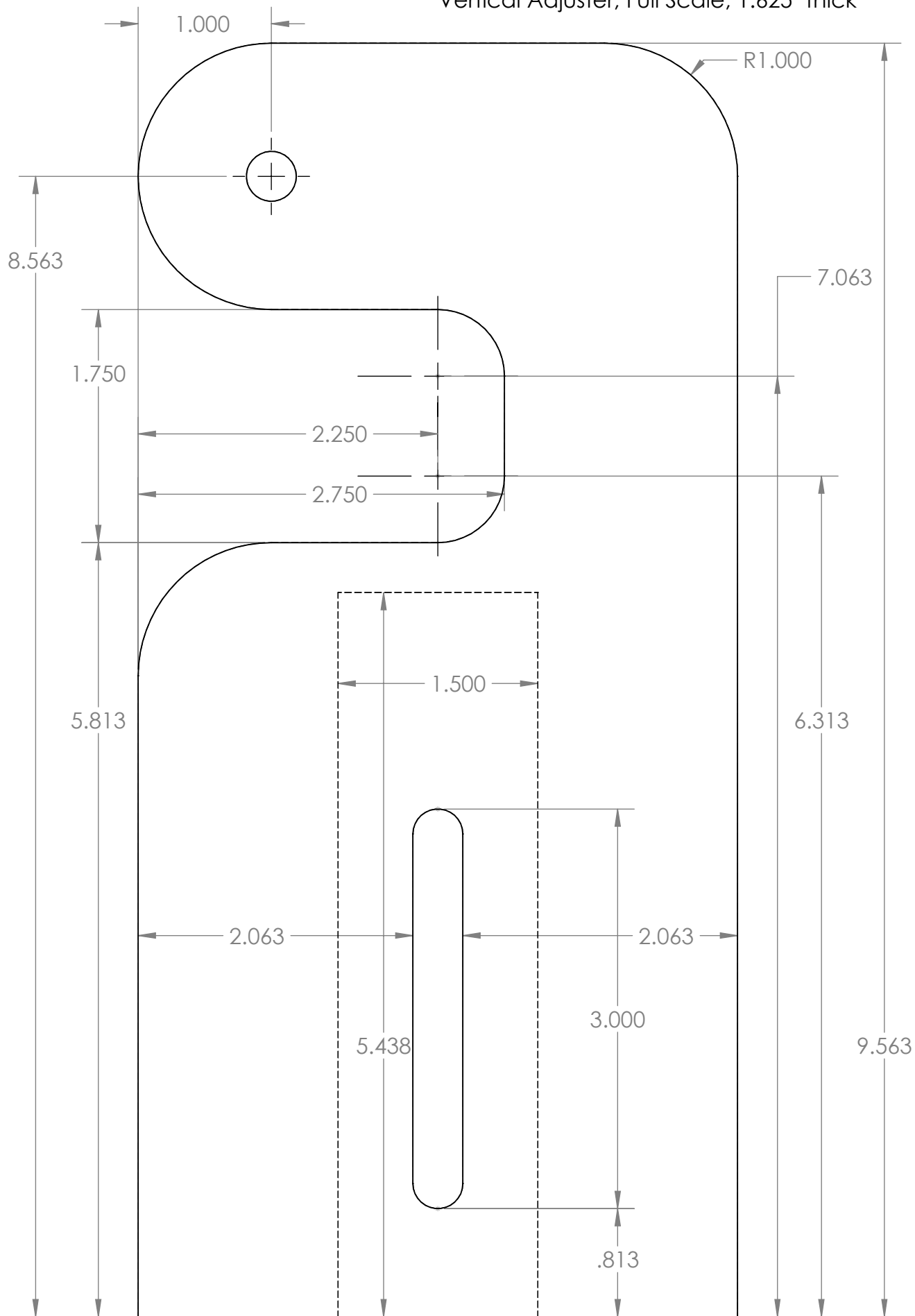


These drawings released under Creative Commons Attribution-NonCommercial license
<https://creativecommons.org/licenses/by-nc/4.0>
 You may not charge for these drawings, if you were charged to obtain these drawings please report to mcglynnonmaking.com



These drawings released under Creative Commons Attribution-NonCommercial license
<https://creativecommons.org/licenses/by-nc/4.0>
 You may not charge for these drawings, if you were charged to obtain these drawings please report to mcglynnonmaking.com

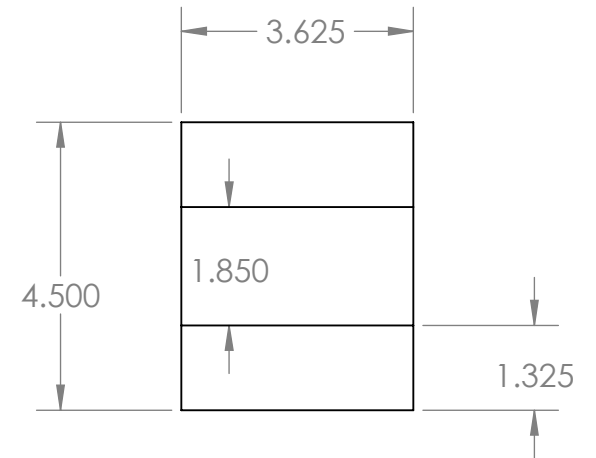
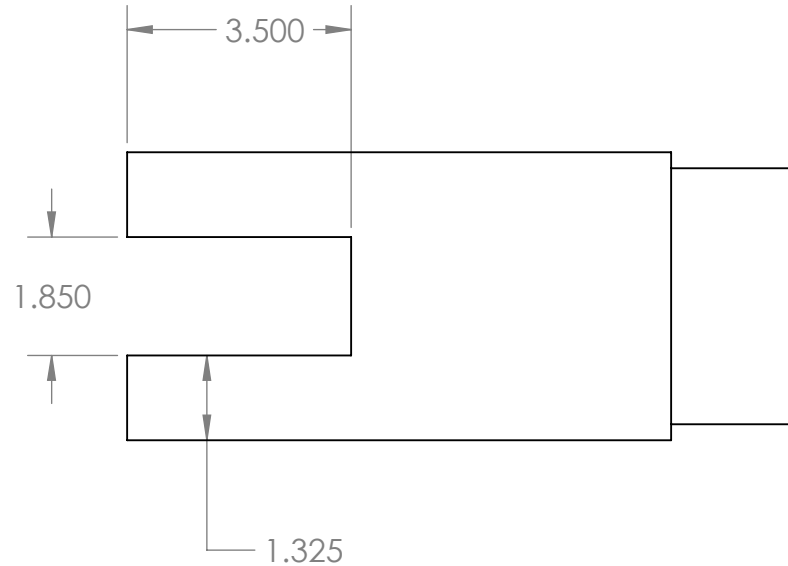
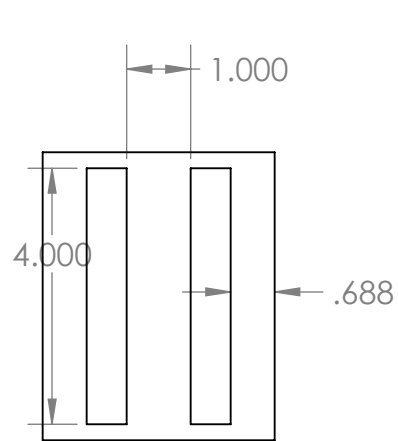
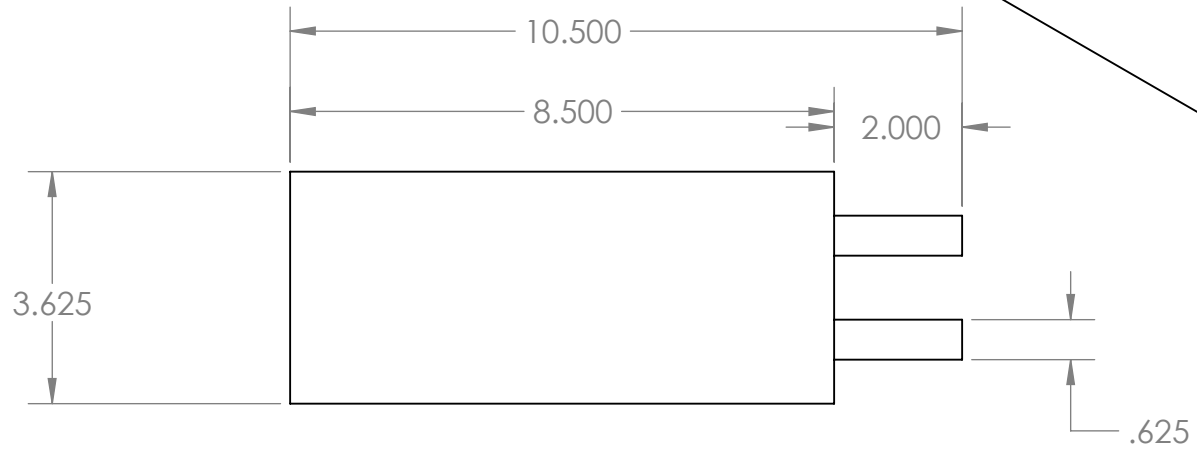
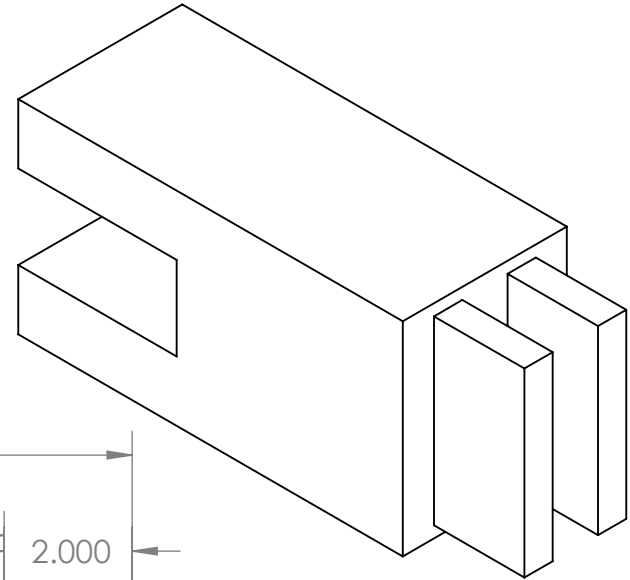
Vertical Adjuster, Full Scale, 1.625" thick



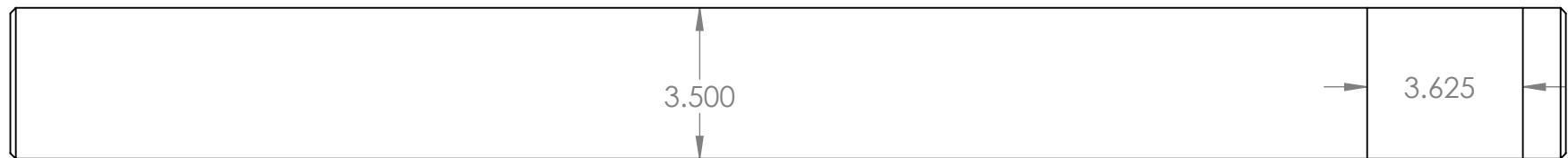
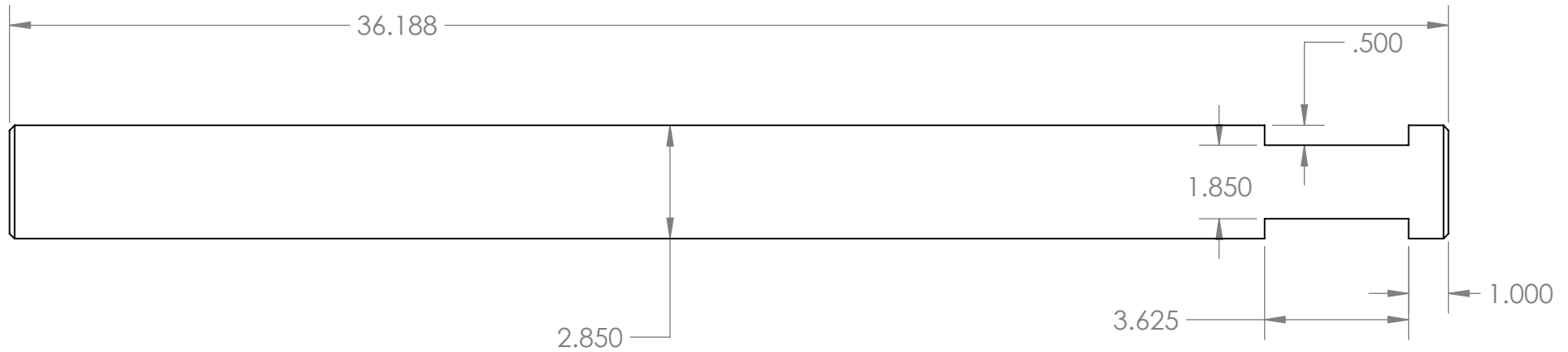
These drawings released under Creative Commons Attribution-NonCommercial license
<https://creativecommons.org/licenses/by-nc/4.0>
You may not charge for these drawings, if you were charged to obtain these drawings please
report to mcglynnonmaking.com

Vertical Saw Post

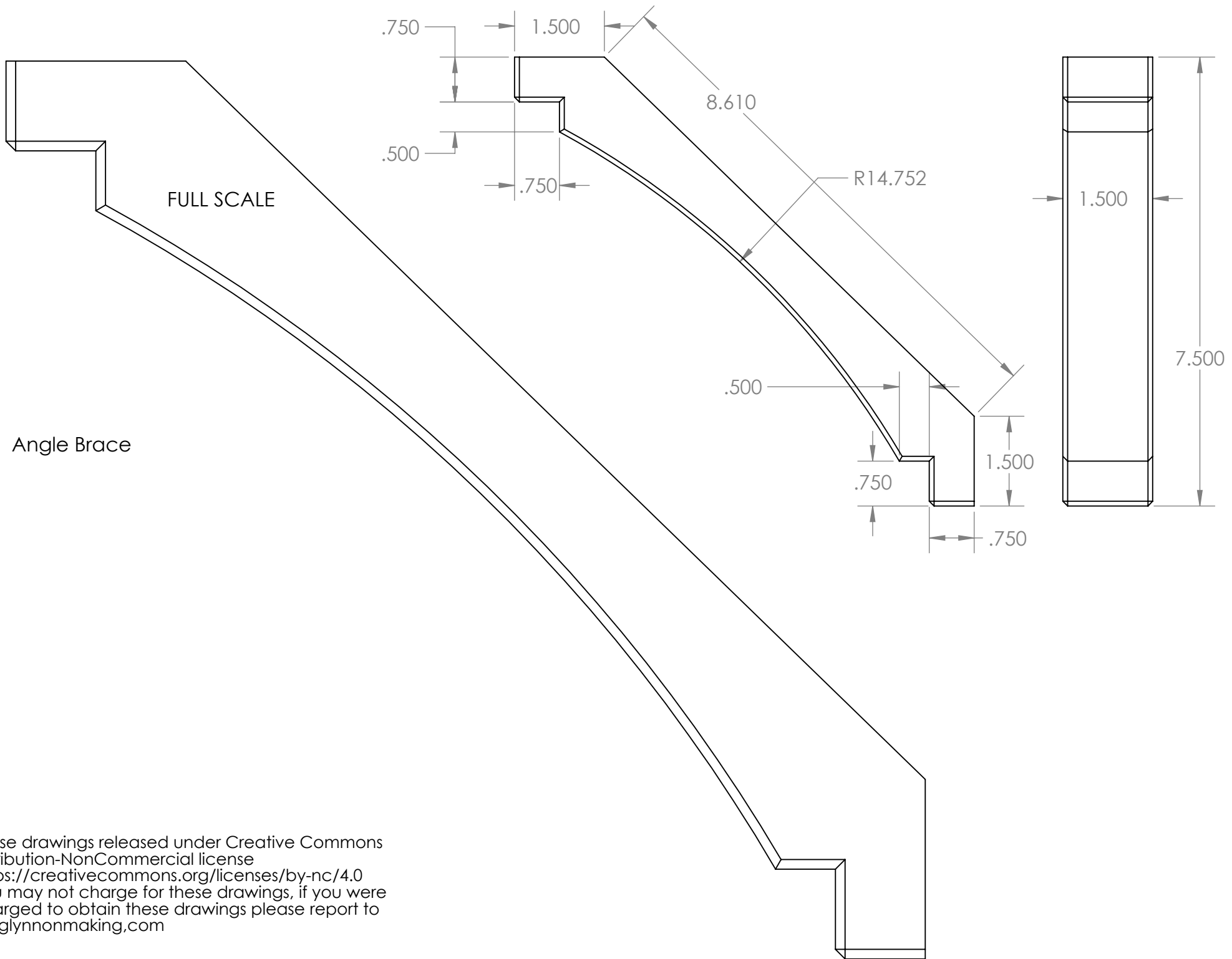
These drawings released under Creative Commons Attribution-NonCommercial license <https://creativecommons.org/licenses/by-nc/4.0>
You may not charge for these drawings, if you were charged to obtain these drawings please report to mcglynnonmaking.com



Horizontal Support Arm

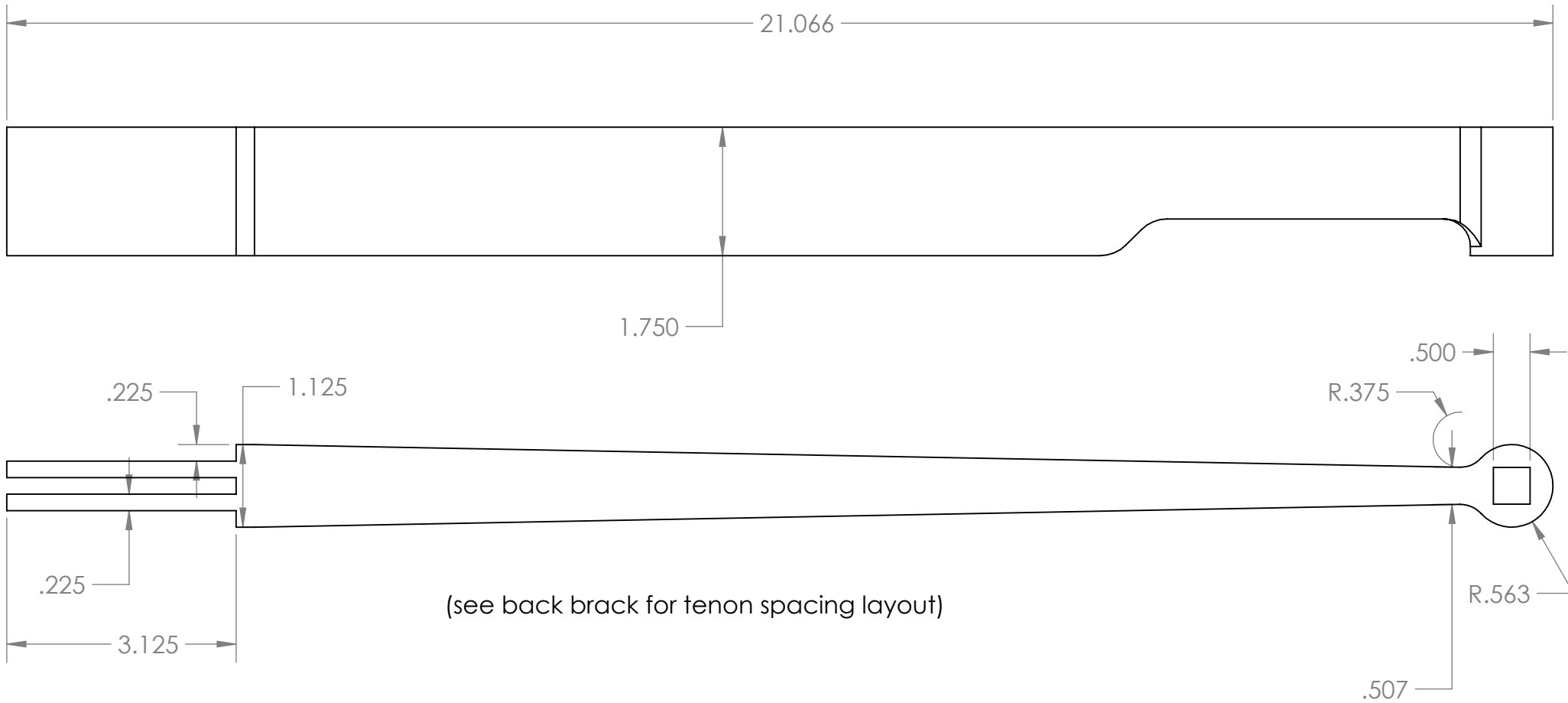


These drawings released under Creative Commons Attribution-NonCommercial license
<https://creativecommons.org/licenses/by-nc/4.0>
You may not charge for these drawings, if you were charged to obtain these drawings please report to mcglynnonmaking.com

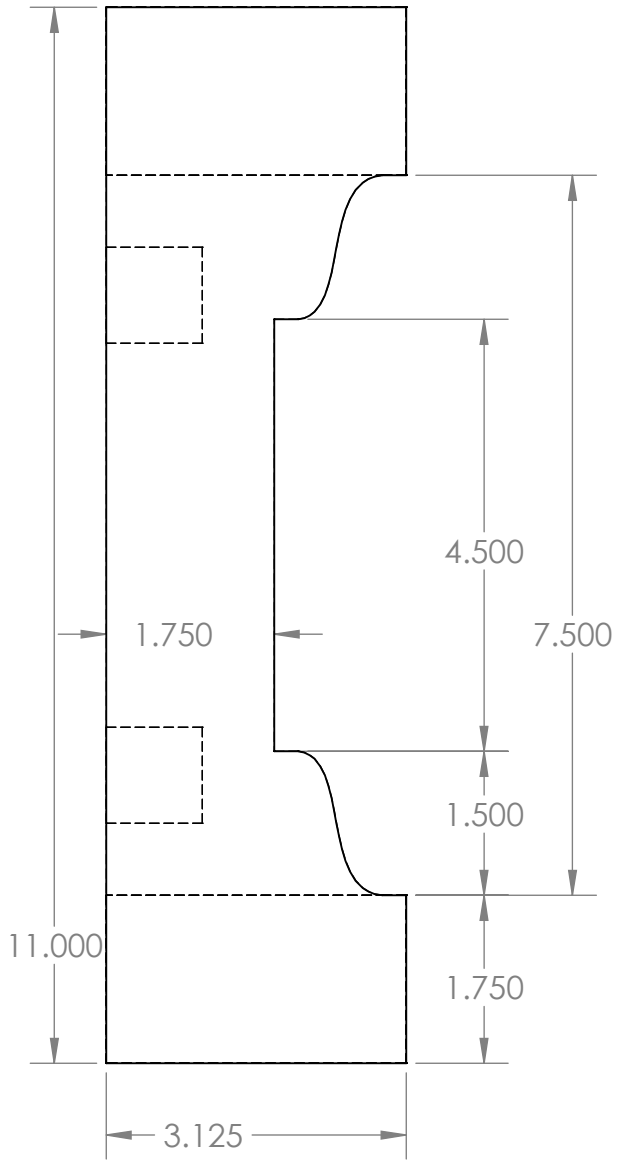


These drawings released under Creative Commons Attribution-NonCommercial license
<https://creativecommons.org/licenses/by-nc/4.0>
 You may not charge for these drawings, if you were charged to obtain these drawings please report to mclynnnonmaking.com

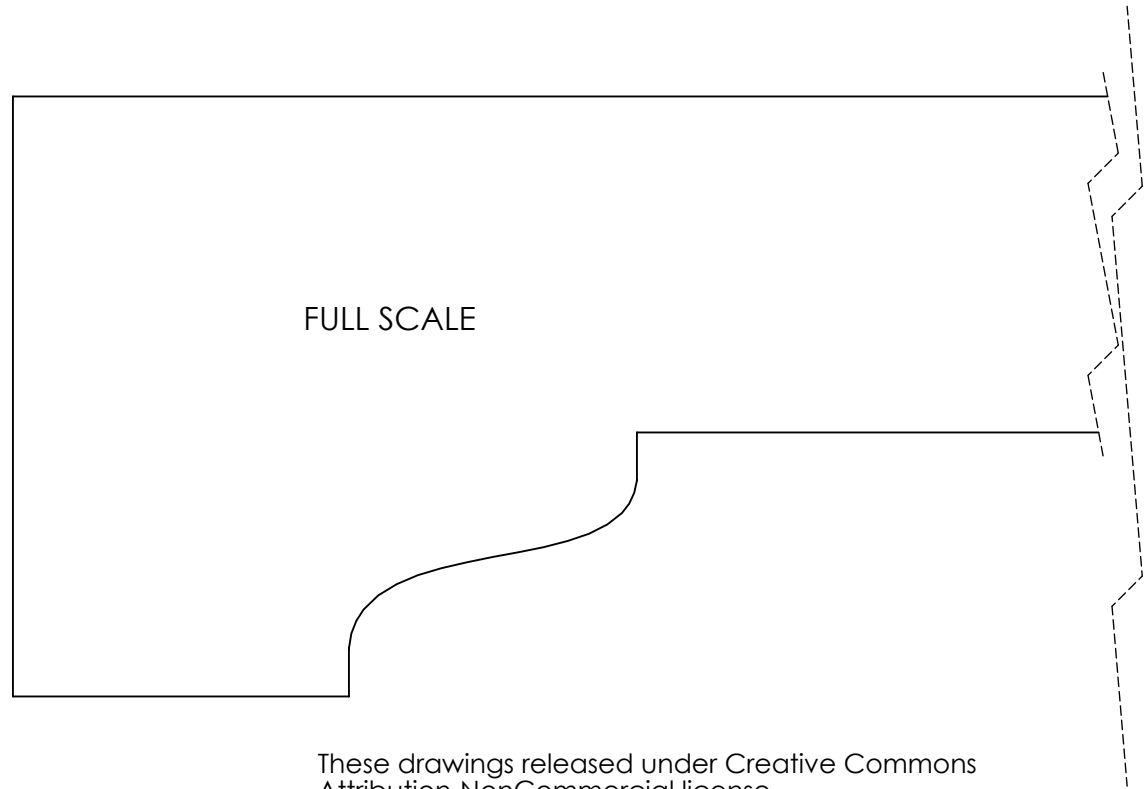
Saw Arm (make 2)



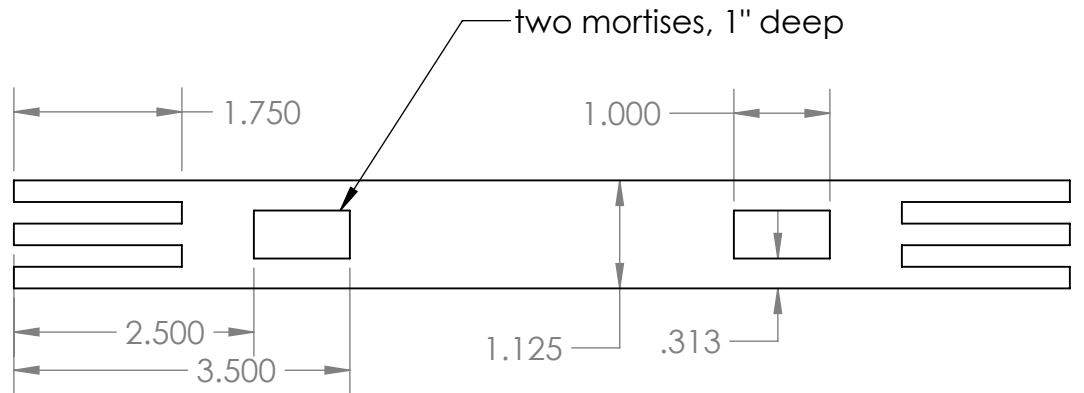
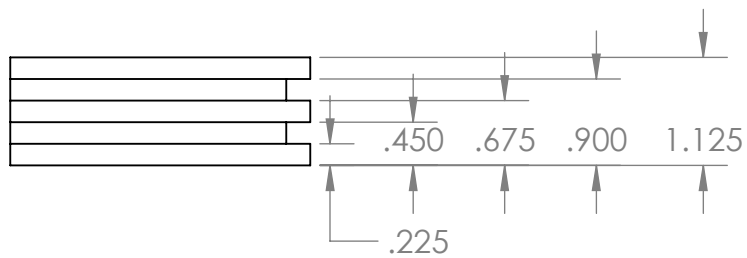
These drawings released under Creative Commons Attribution-NonCommercial license
<https://creativecommons.org/licenses/by-nc/4.0>
You may not charge for these drawings, if you were charged to obtain these drawings please report to mcglynnonmaking.com



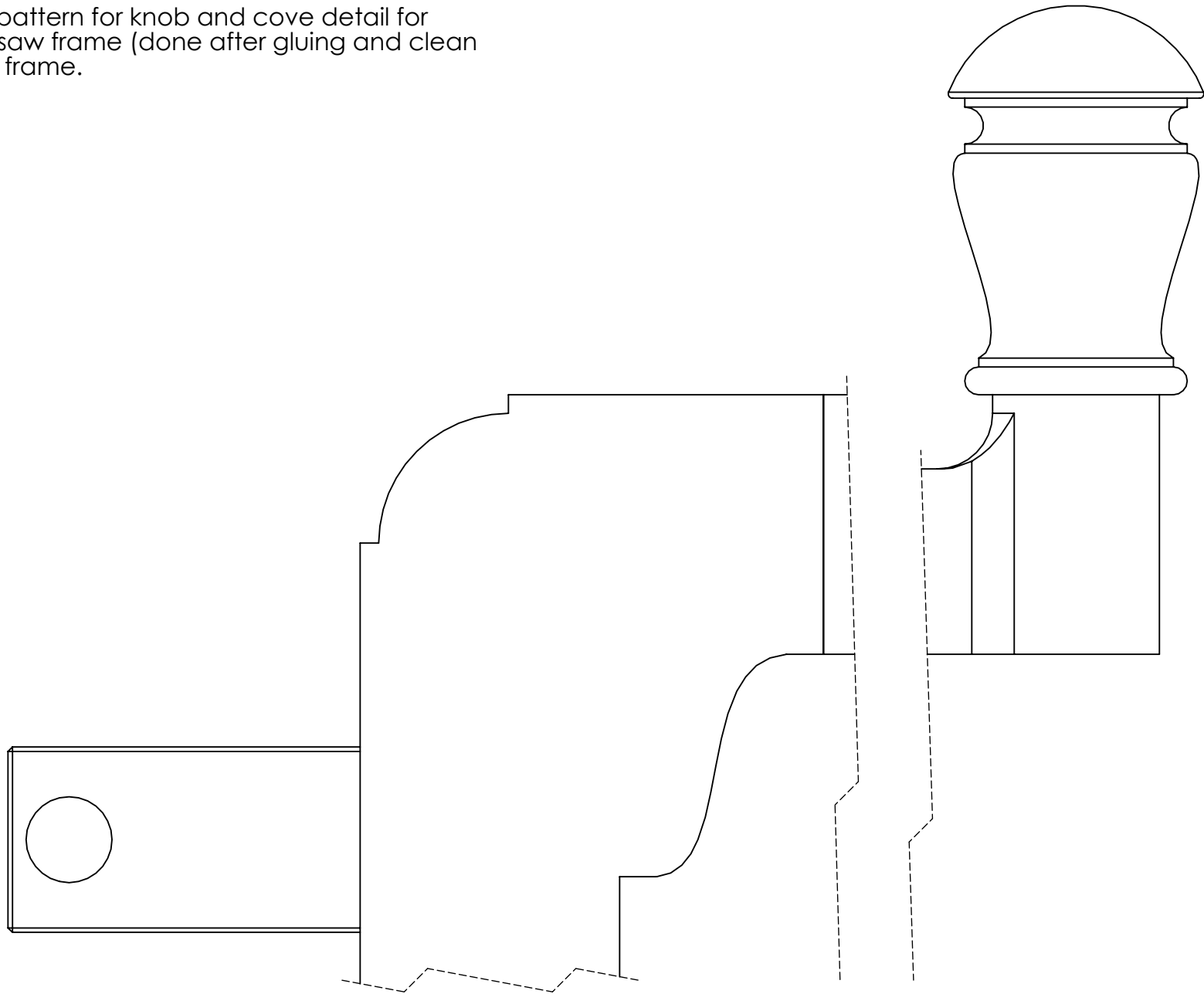
Saw Back



These drawings released under Creative Commons Attribution-NonCommercial license
<https://creativecommons.org/licenses/by-nc/4.0>
 You may not charge for these drawings, if you were charged to obtain these drawings please report to mcglynnonmaking.com

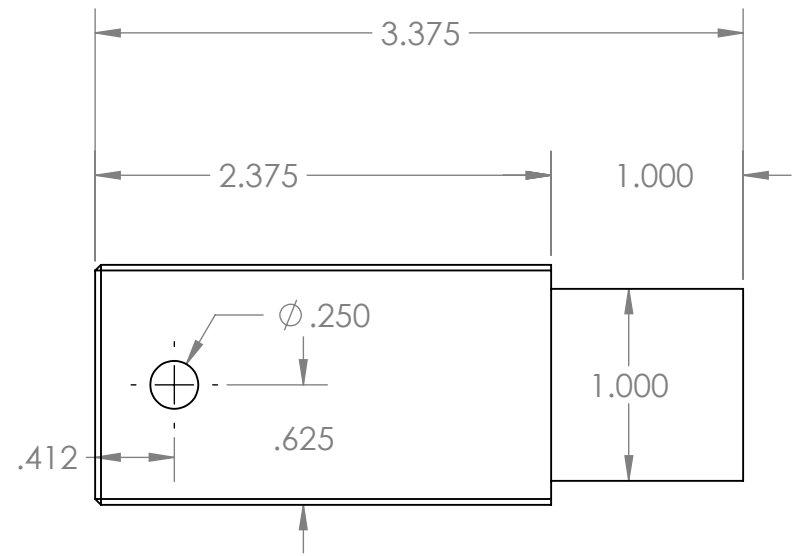
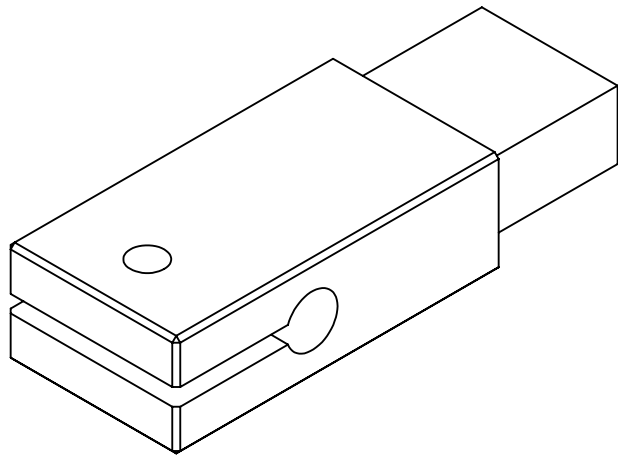


Full scale pattern for knob and cove detail for corner of saw frame (done after gluing and clean up of saw frame.

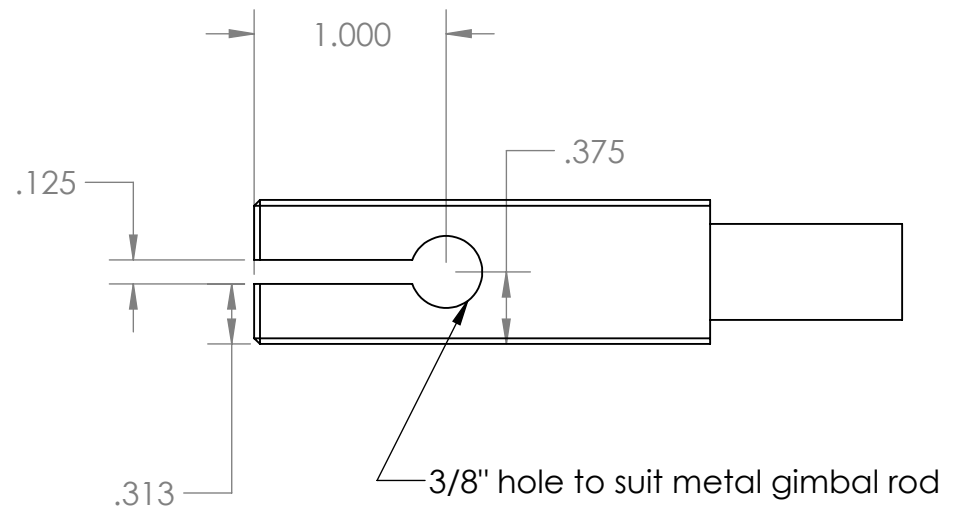
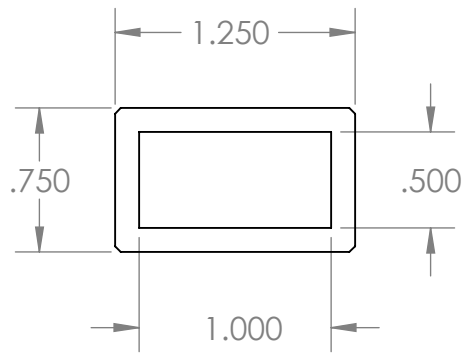


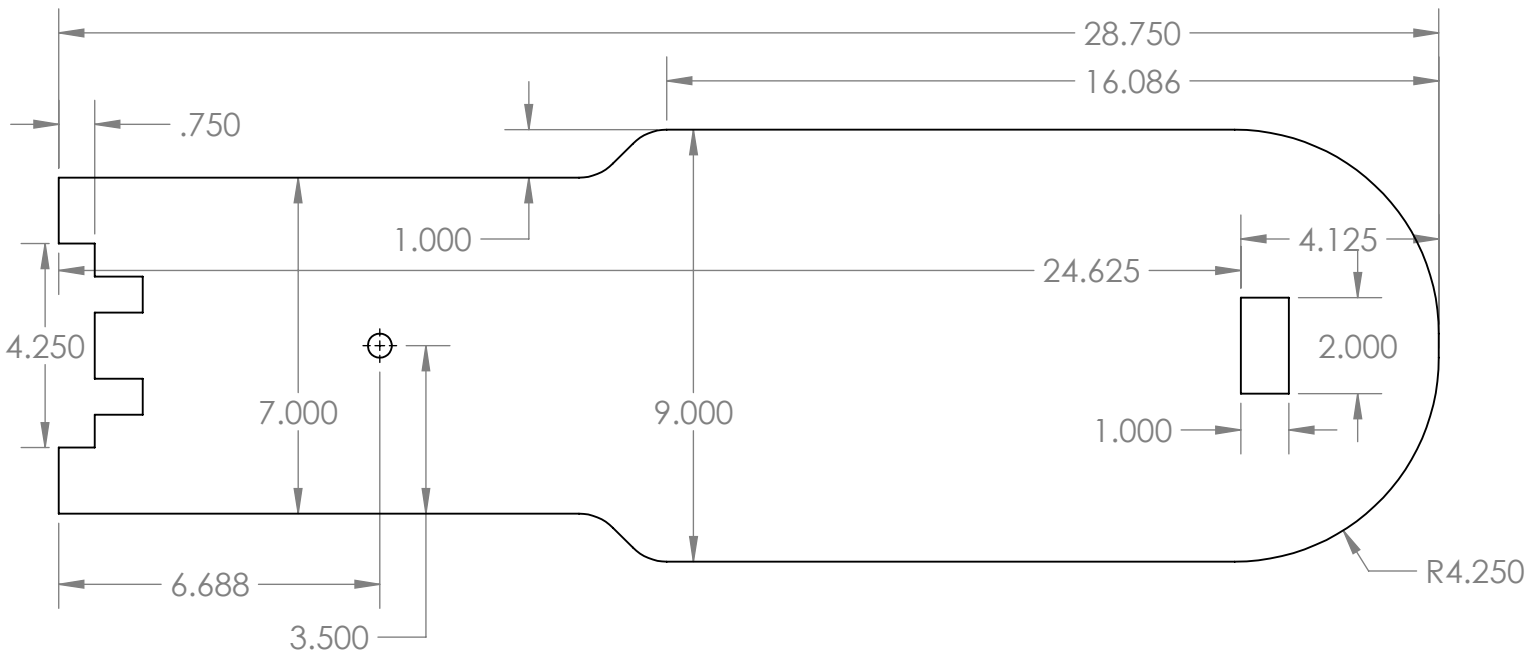
These drawings released under Creative Commons Attribution-NonCommercial license
<https://creativecommons.org/licenses/by-nc/4.0>
You may not charge for these drawings, if you were charged to obtain these drawings please report to mcglynnonmaking.com

Gimbal Mount Bracket for Saw Frame

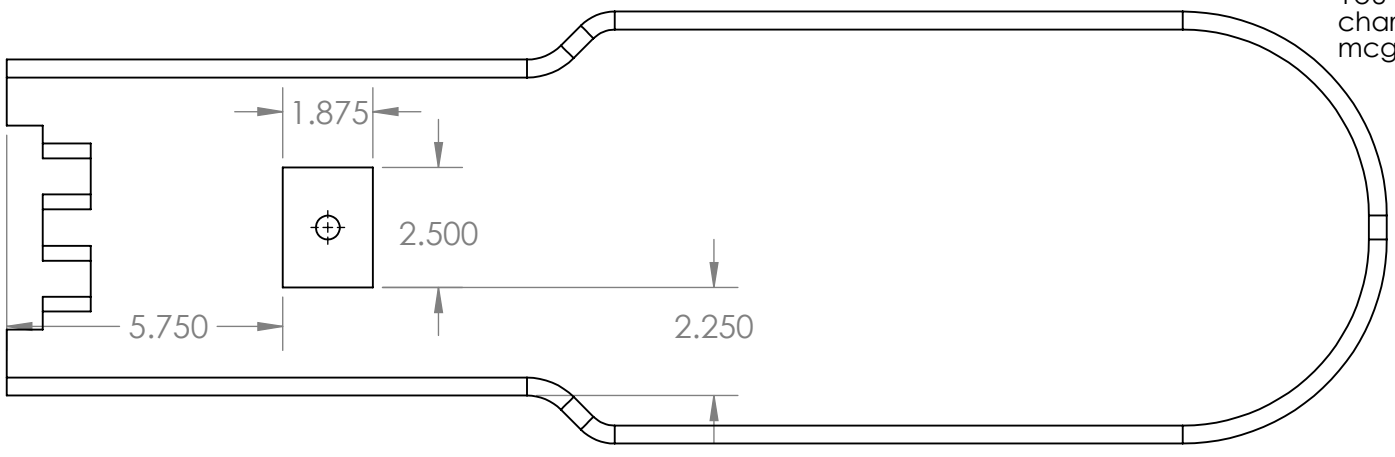
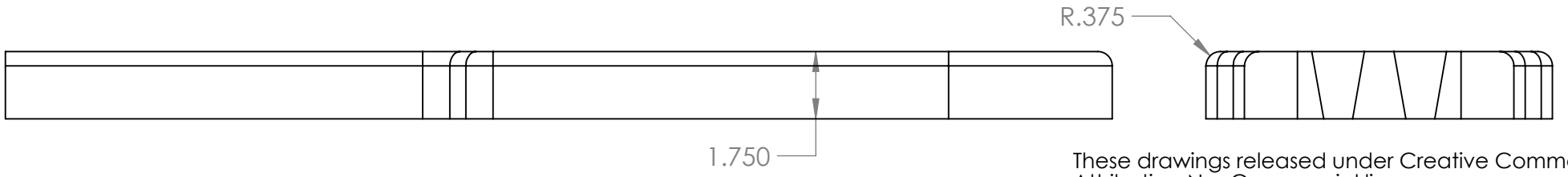


These drawings released under Creative Commons Attribution-NonCommercial license
<https://creativecommons.org/licenses/by-nc/4.0>
 You may not charge for these drawings, if you were charged to obtain these drawings please report to mcglynnonmaking.com



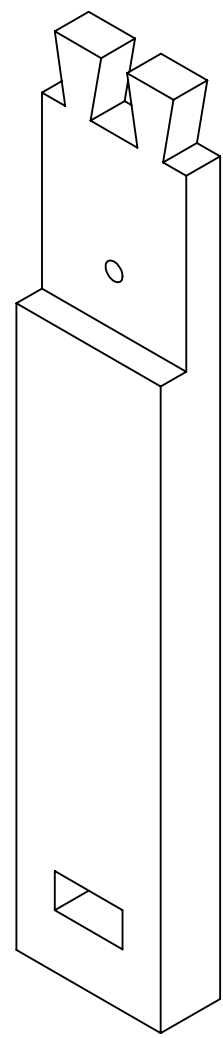
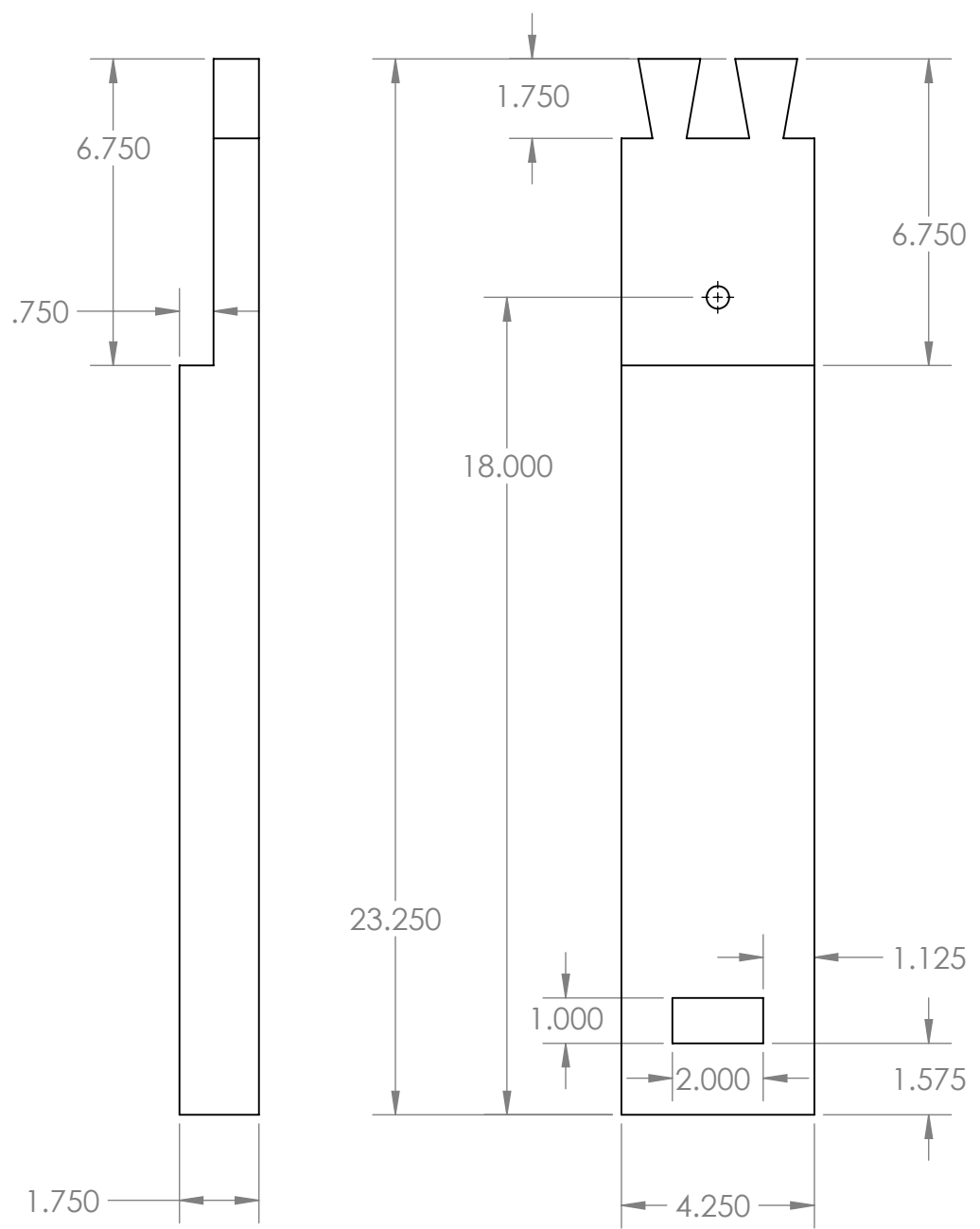


Seat

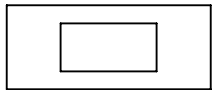


These drawings released under Creative Commons Attribution-NonCommercial license
<https://creativecommons.org/licenses/by-nc/4.0>
 You may not charge for these drawings, if you were charged to obtain these drawings please report to mcglynnonmaking.com

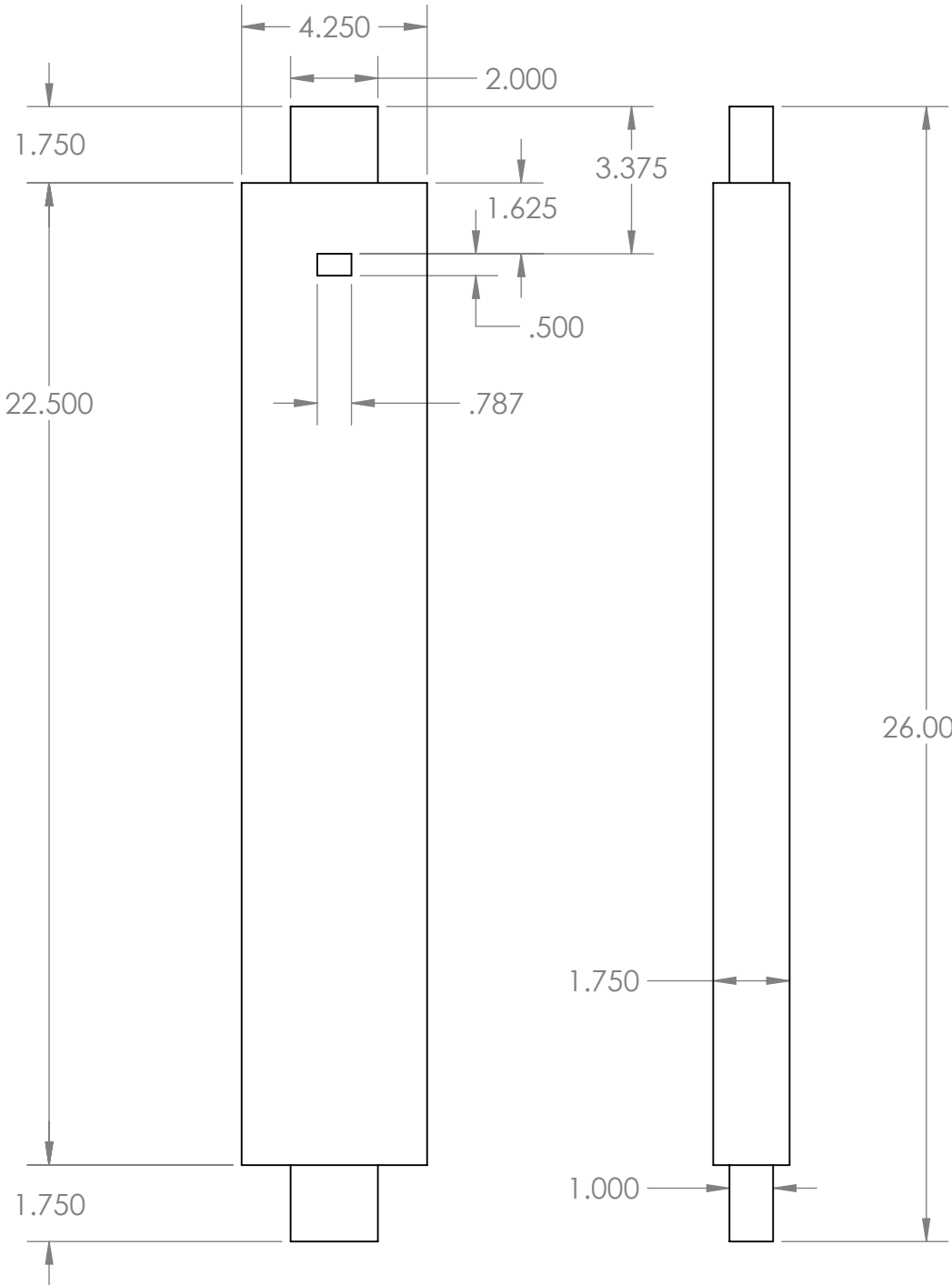
Front Leg



These drawings released under Creative Commons Attribution-NonCommercial license
<https://creativecommons.org/licenses/by-nc/4.0>
 You may not charge for these drawings, if you were charged to obtain these drawings please report to mcglynnonmaking.com

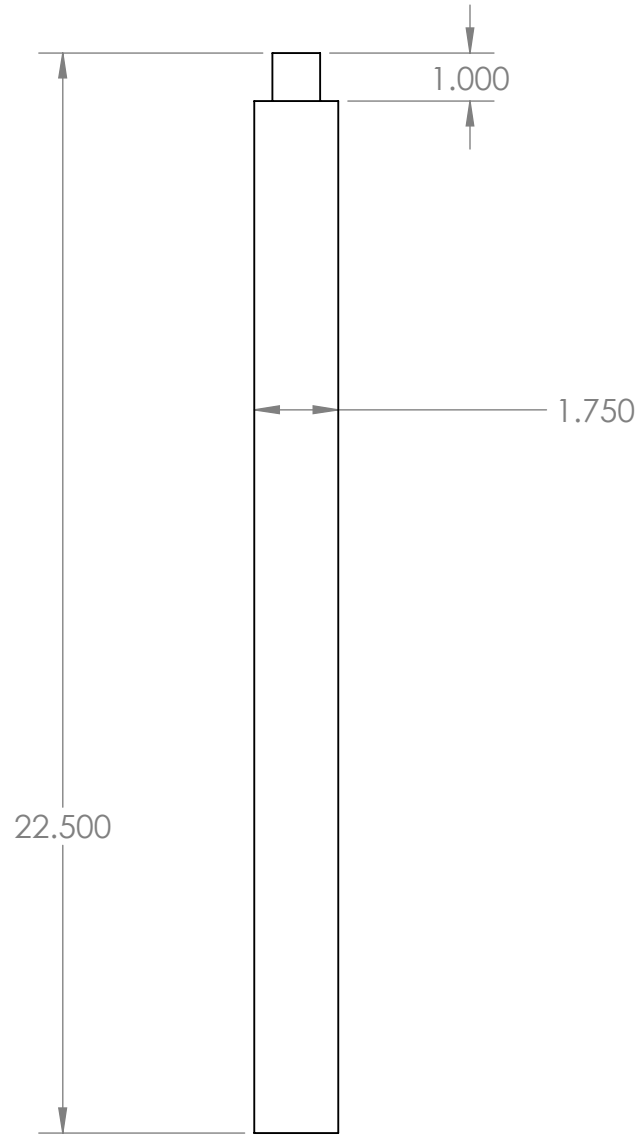
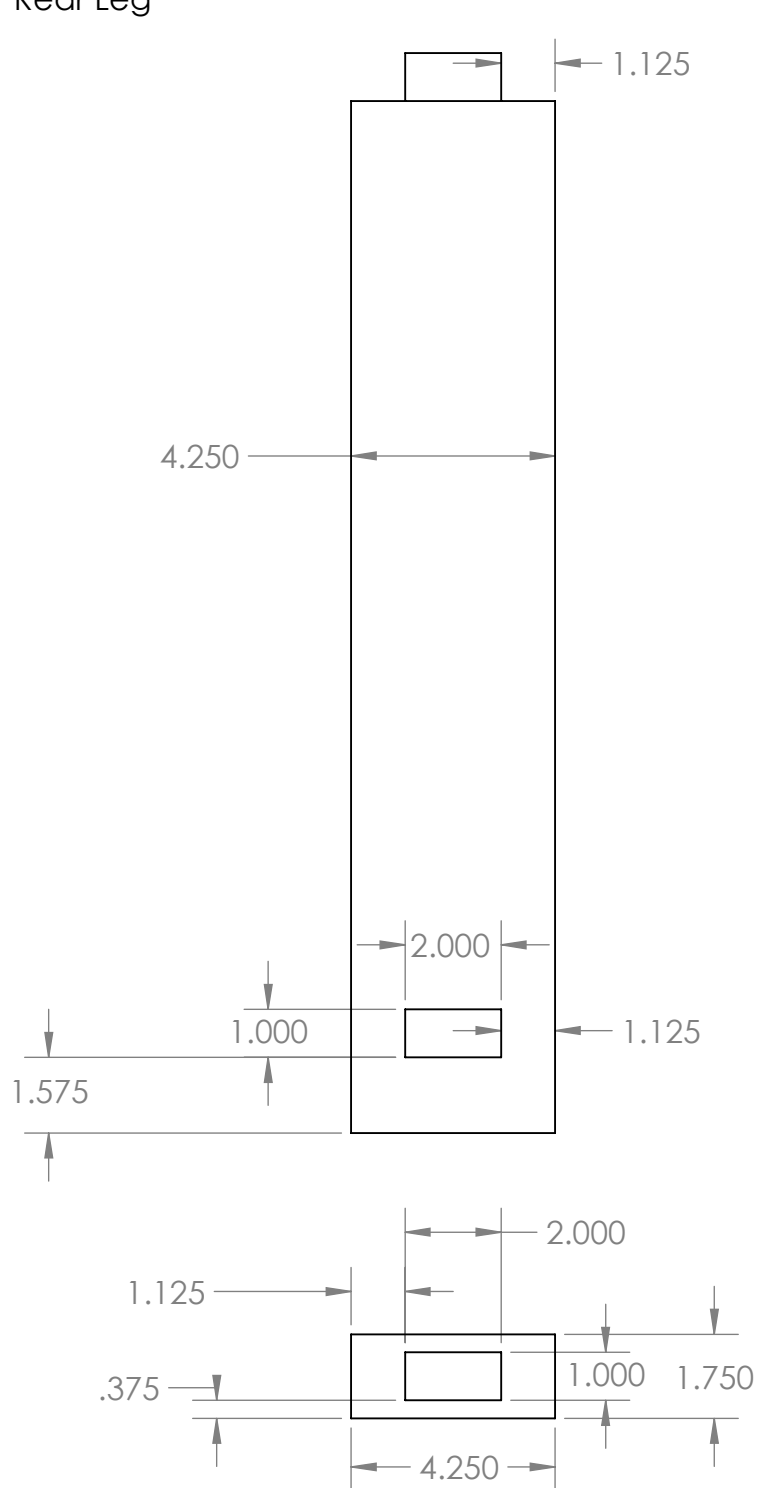


Seat Stretcher



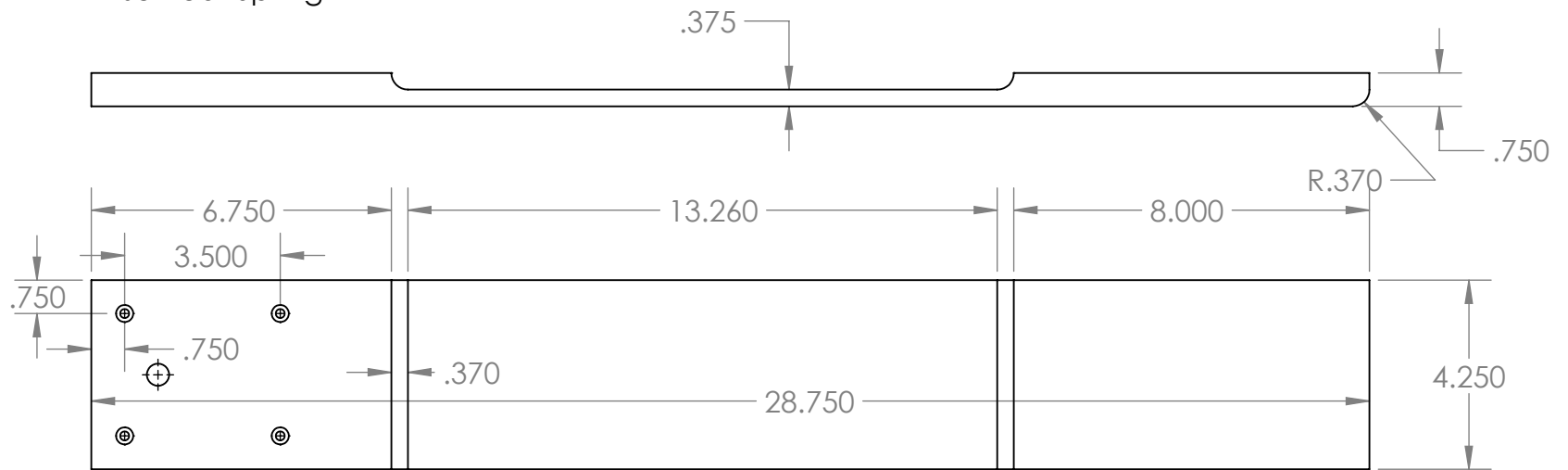
These drawings released under Creative Commons Attribution-NonCommercial license <https://creativecommons.org/licenses/by-nc/4.0> You may not charge for these drawings, if you were charged to obtain these drawings please report to mcglynnonmaking.com

Rear Leg

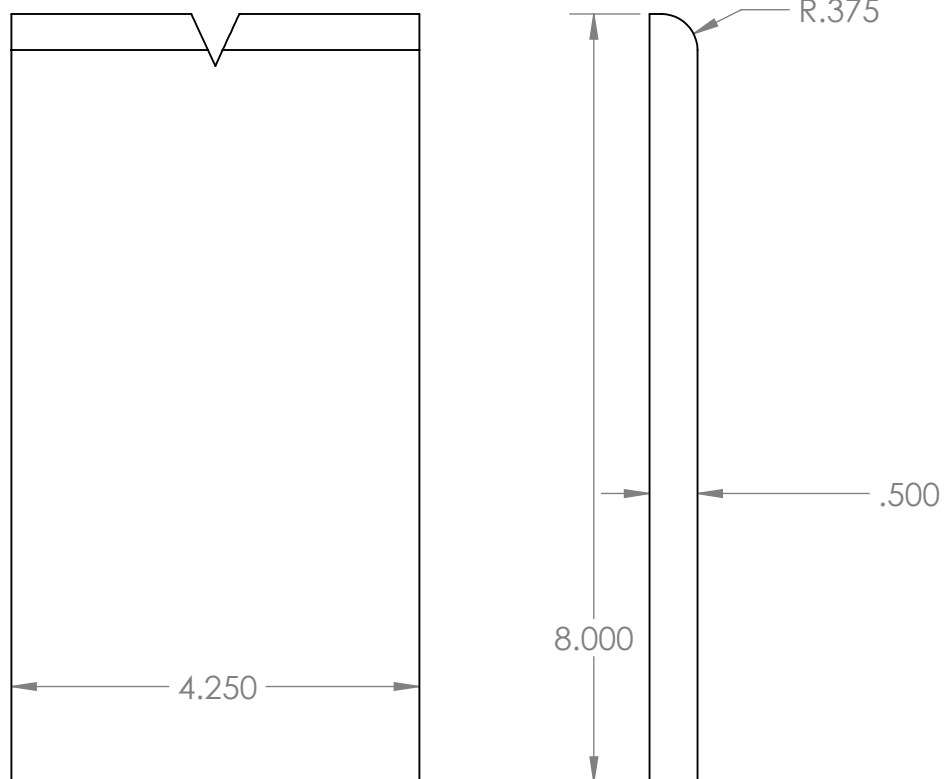


These drawings released under Creative Commons Attribution-NonCommercial license
<https://creativecommons.org/licenses/by-nc/4.0>
You may not charge for these drawings, if you were charged to obtain these drawings please report to mcglynnonmaking.com

Vise Rear Spring

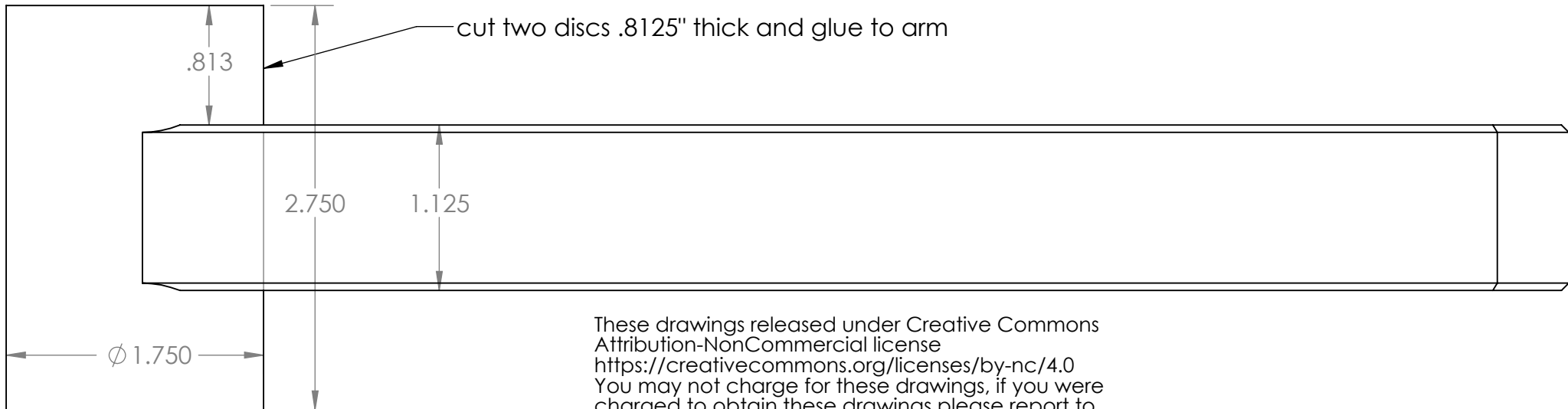
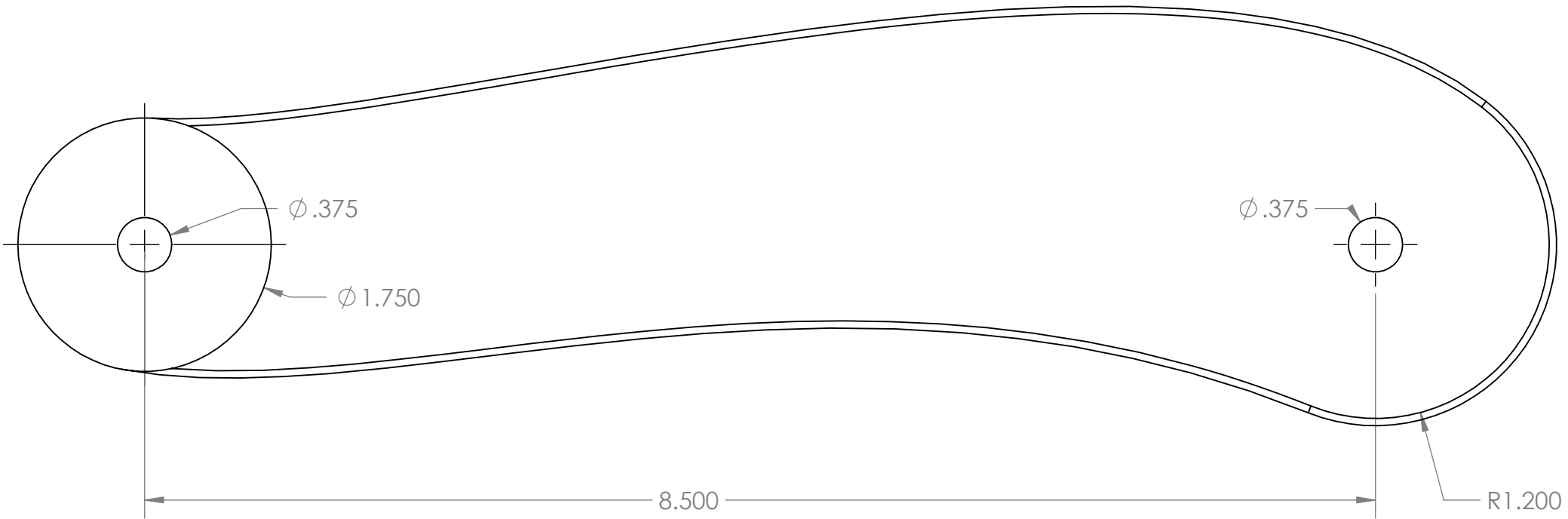


Vise Jaw (make 2)



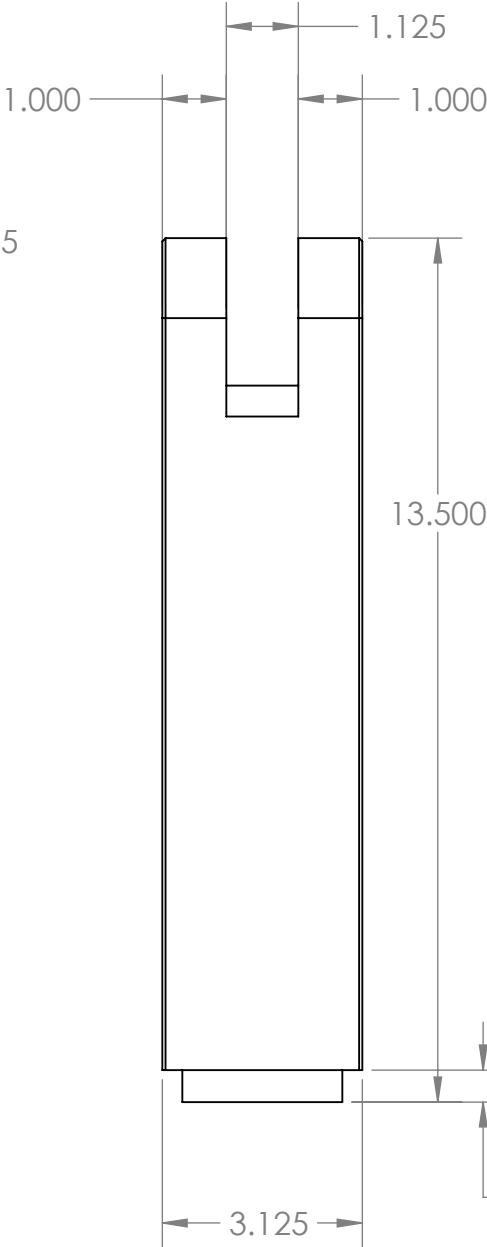
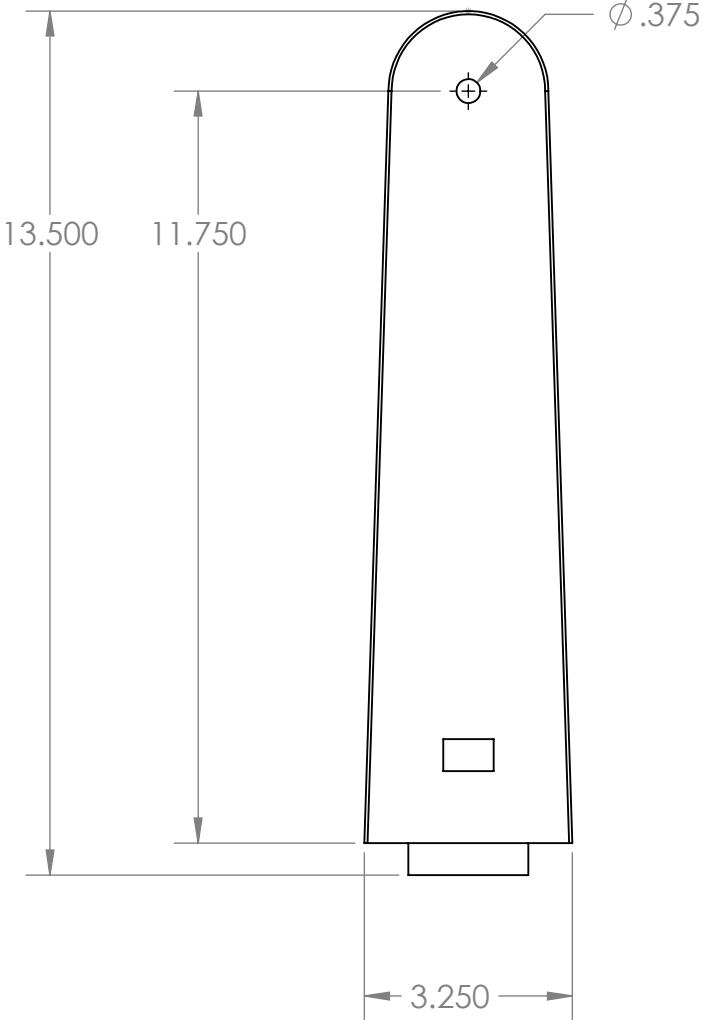
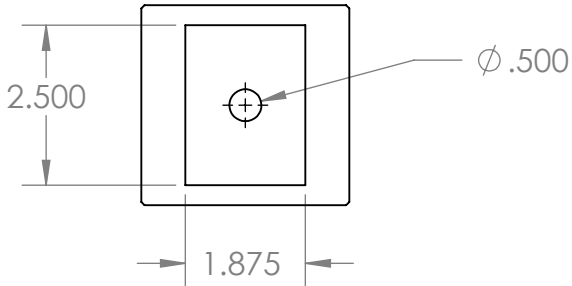
These drawings released under Creative Commons Attribution-NonCommercial license
<https://creativecommons.org/licenses/by-nc/4.0>
 You may not charge for these drawings, if you were charged to obtain these drawings please report to mcglynnonmaking.com

Lever Arm, Full Scale

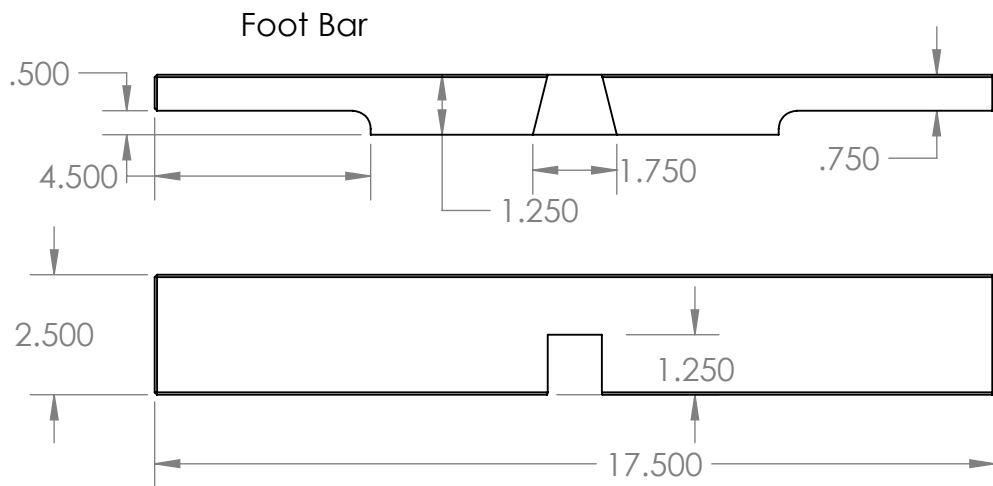


These drawings released under Creative Commons Attribution-NonCommercial license
<https://creativecommons.org/licenses/by-nc/4.0>
You may not charge for these drawings, if you were charged to obtain these drawings please report to mcglynnonmaking.com

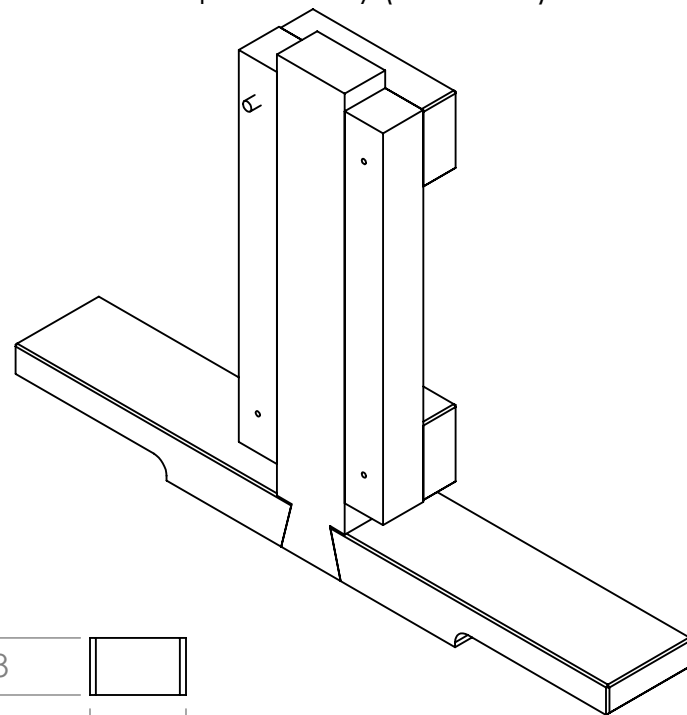
Clamp Riser



These drawings released under Creative Commons Attribution-NonCommercial license <https://creativecommons.org/licenses/by-nc/4.0> You may not charge for these drawings, if you were charged to obtain these drawings please report to mcglynnonmaking.com

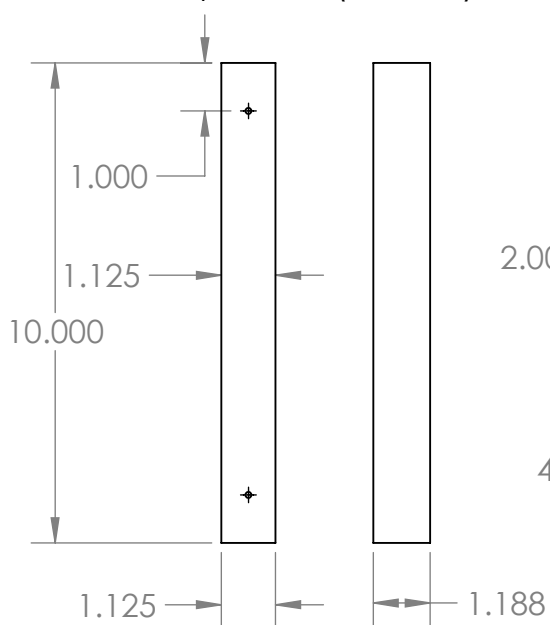


Foot Clamp Assembly (rear view)

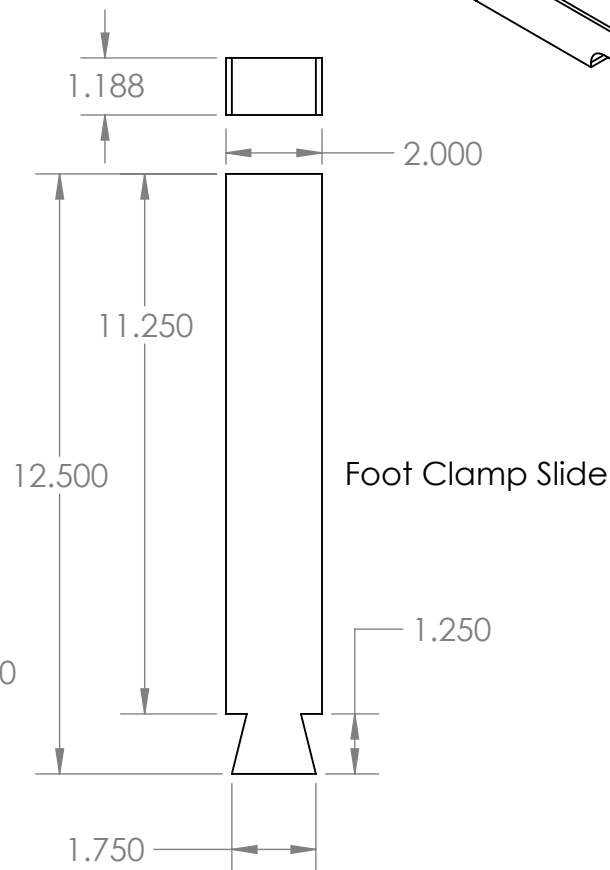
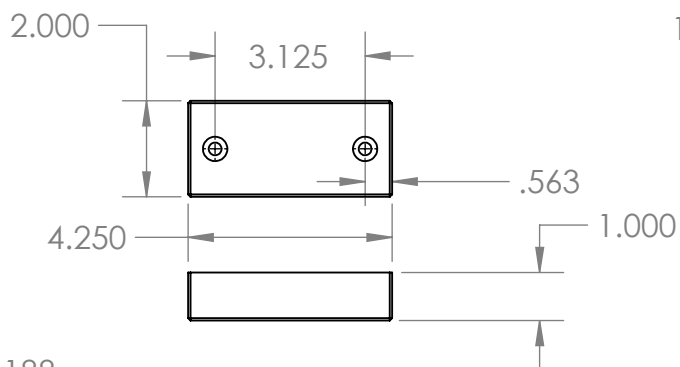


These drawings released under Creative Commons Attribution-NonCommercial license
<https://creativecommons.org/licenses/by-nc/4.0>
 You may not charge for these drawings, if you were charged to obtain these drawings please report to mcglynnonmaking.com

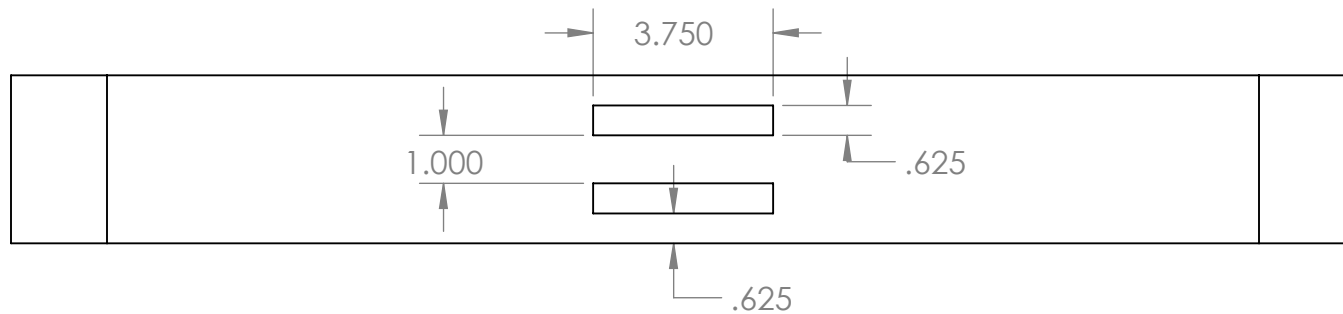
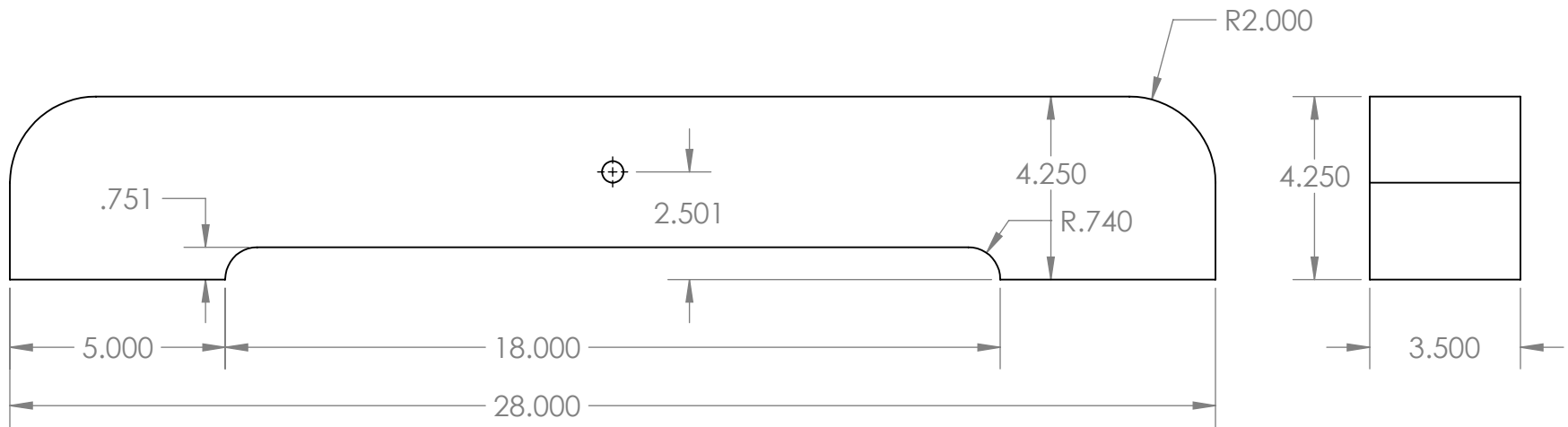
Foot Clamp Guide (make 2)



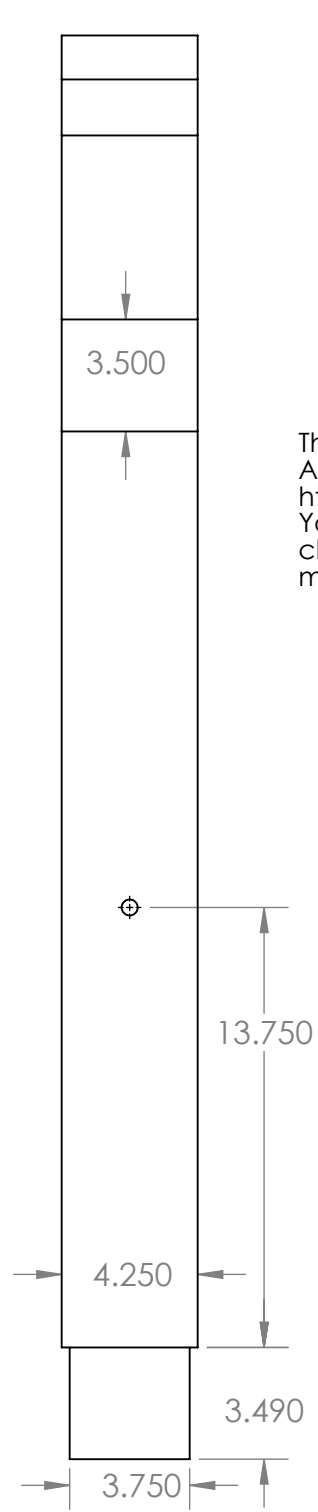
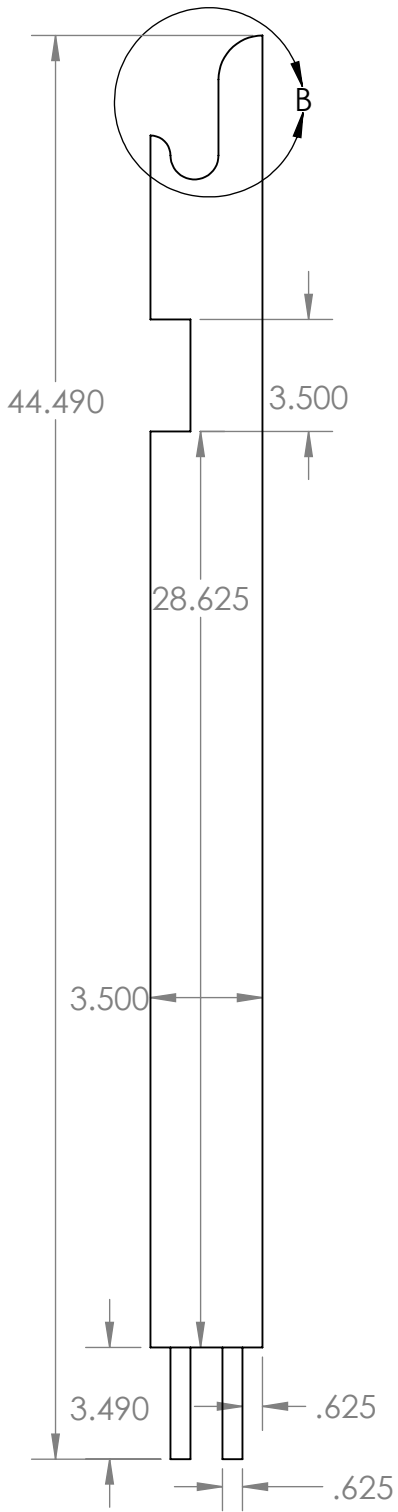
Foot Clamp Retainer (make 2)



Base



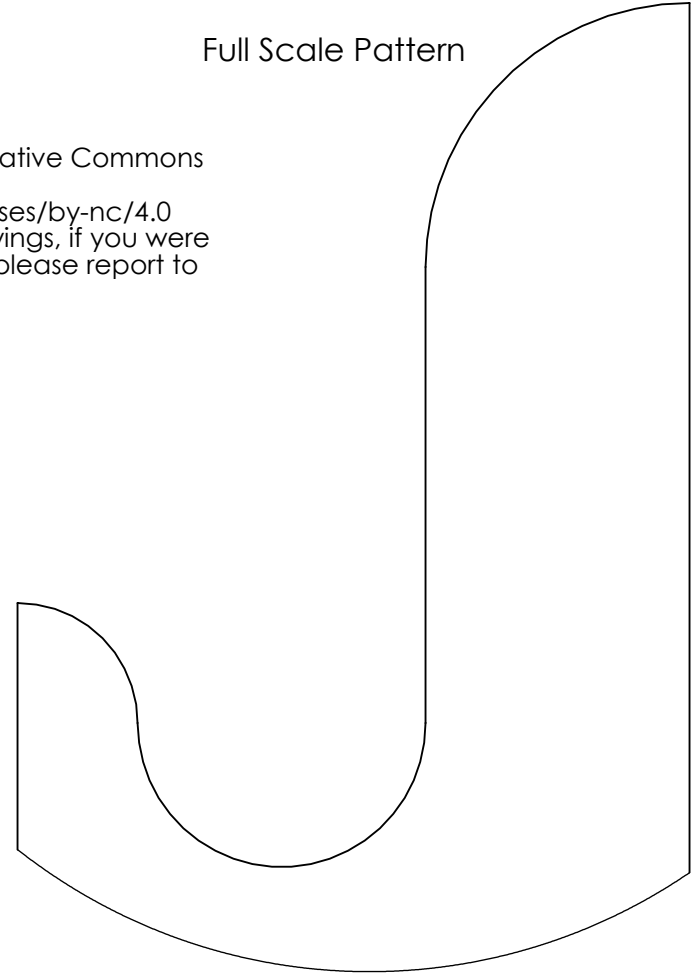
These drawings released under Creative Commons Attribution-NonCommercial license <https://creativecommons.org/licenses/by-nc/4.0> You may not charge for these drawings, if you were charged to obtain these drawings please report to mcglynnonmaking.com



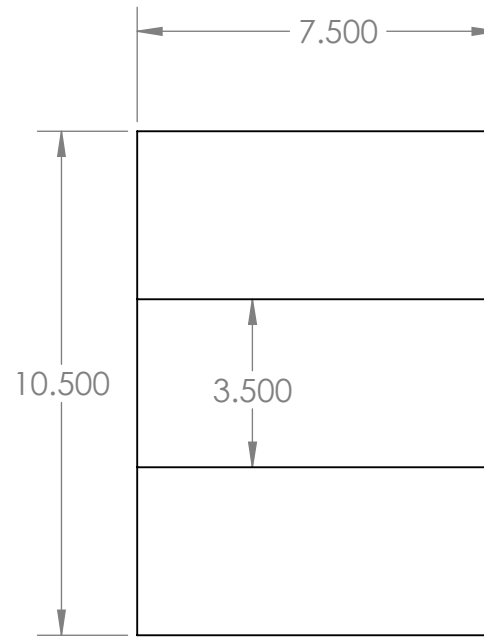
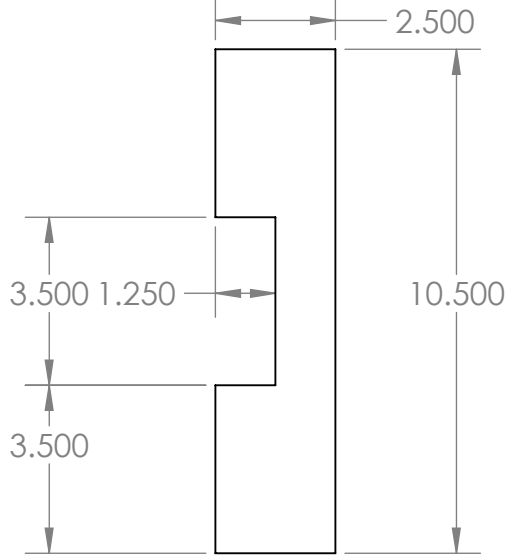
Upright Post

These drawings released under Creative Commons Attribution-NonCommercial license <https://creativecommons.org/licenses/by-nc/4.0> You may not charge for these drawings, if you were charged to obtain these drawings please report to mcglynnonmaking.com

Full Scale Pattern

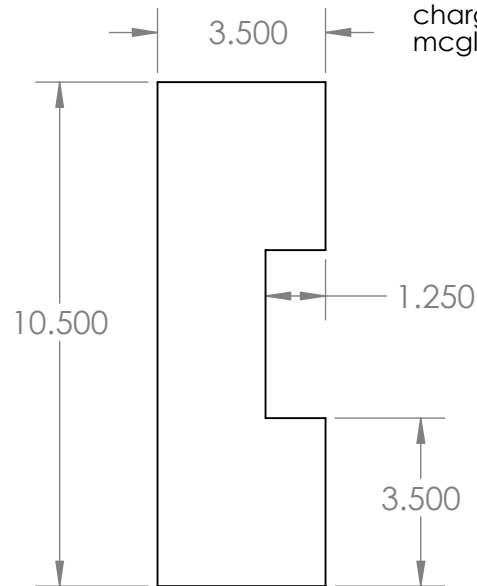
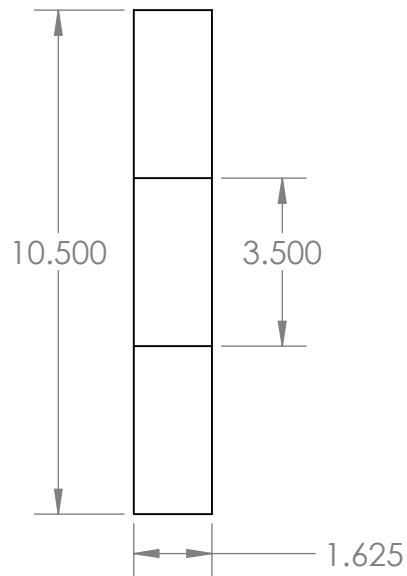


Front Clamp Plate



(not shown: four 1/2" holes for bolts through front clamp plate and side blocks. Mortise the square nuts into the rear of the assembly)

Side Block (make 2)



These drawings released under Creative Commons Attribution-NonCommercial license <https://creativecommons.org/licenses/by-nc/4.0> You may not charge for these drawings, if you were charged to obtain these drawings please report to mcglynnonmaking.com